



**iMapInvasives**  
*geotracking invasive exotic species*



# **iMapInvasives:**

**A Collaborative Partnership Working to  
Develop a Web-Based Solution for Invasive  
Species Data Aggregation,  
Mapping, Decision-Making & Action!**

**Meg Wilkinson**  
**Invasive Species Database Program Coordinator**  
**New York Natural Heritage Program**

**Maryland Invasive Species Council Meeting – January 22, 2009**

# Most Frequent Threats (2001): TNC NY's Priority Landscapes **n=27**

- Invasive Species: 20 sites
- Residential Development: 19
- Agricultural Practices: 7
- Non-Point Water Pollution: 7
- Fire Suppression: 7
- Incompatible Forestry: 7
- Hydrologic Alteration /  
Dams & Barriers: 7
- Incompatible Recreation: 6
- Pests & Pathogens: 6

# NY ISTF

*Convened in 2004*

## Diverse Stakeholders

- **Government Agencies**

- Department of Environmental Conservation (DEC)
- Ag & Markets (DAM)
- Department of Transportation (DOT)
- Office of Parks Recreation & Historic Preservation (OPRHP)
- Thruway and Canal Authority
- Adirondack Park Agency (APA)

- **Conservation Groups**

- The Nature Conservancy (TNC)
- New York Natural Heritage Program (NYNHP)
- NY Biodiversity Research Institute (BRI)

- **Academia**

- Cornell University

- **Trade Organizations**

- NY Nursery & Landscape Assoc.
- NY Farm Bureau





# INVASIVE SPECIES

OF CONCERN IN MARYLAND

HOME

About MISC

Next MISC Meeting

History and Description

Organization and Procedures

How to Get Involved

Active Members

Calendar of Events

Invader of the Month

In the News

Invasive Species of Concern in Maryland

Information and Resources

## About MISC : Active Members

### Maryland Invasive Species Council

Membership as of April, 2004

#### Gary Barkman

Weed Control Coordinator  
Montgomery County Weed Control  
301.503.6024  
[gbarkmansr@msn.com](mailto:gbarkmansr@msn.com)

#### Dick Bean

Survey Entomologist  
Maryland Department of Agriculture  
Plant Protection and Weed Management  
410.841.5920  
[beanra@mda.state.md.us](mailto:beanra@mda.state.md.us)

#### Carole Bergmann

Forest Ecologist  
Maryland-National Capital Park and Planning Commission  
Mid-Atlantic Pest Plant Council  
Maryland Native Plant Society  
[carole.bergmann@mncppc-mc.org](mailto:carole.bergmann@mncppc-mc.org)

#### Stephen Bullington

Pest Survey Specialist  
USDA APHIS

→ NY Invasive Species Council (ISC)  
&  
NY Invasive Species Advisory Committee

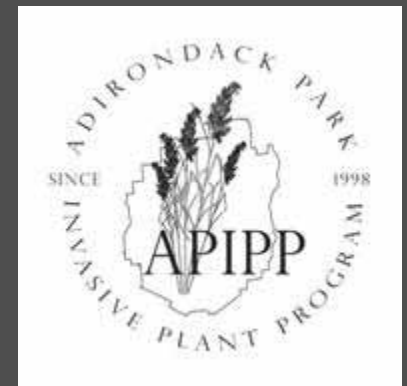
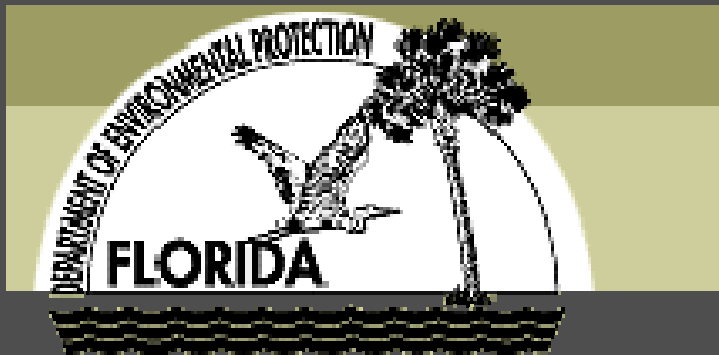




# Individuals/Organizations Collecting data

- no centralized repository
- No “Big Picture”

*NYSDO*.GOV



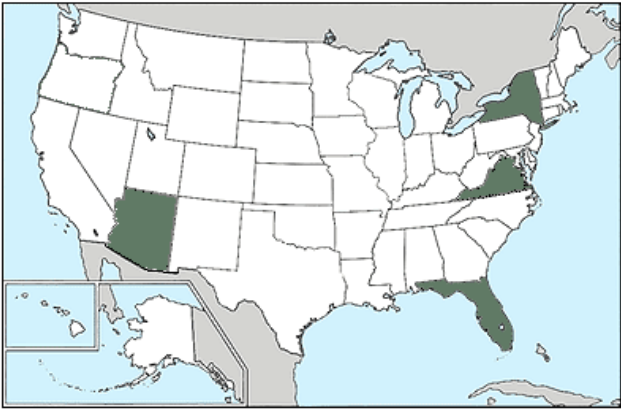
Recommendation #5 of ISTF: “New York State should establish a state-wide database clearinghouse for all taxa of invasive species .....”

**Trained Volunteers &  
Field Professionals**

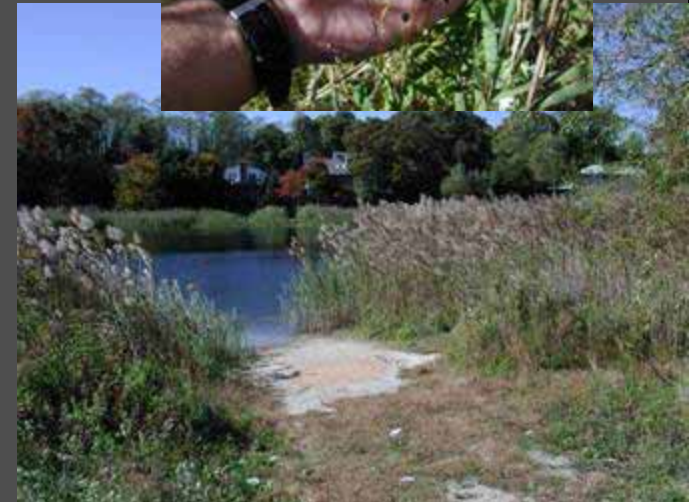
**Maps &  
Analysis**



New York Natural Heritage Program



- Invasive Species a primary threat to biodiversity
- FNAI/NYNHP well positioned to address part of the problem
  - Existing data management infrastructure
  - Expertise managing biodiversity data
  - Botanical and ecological expertise
  - Important complementary data
  - Strong connection with regulatory and planning processes



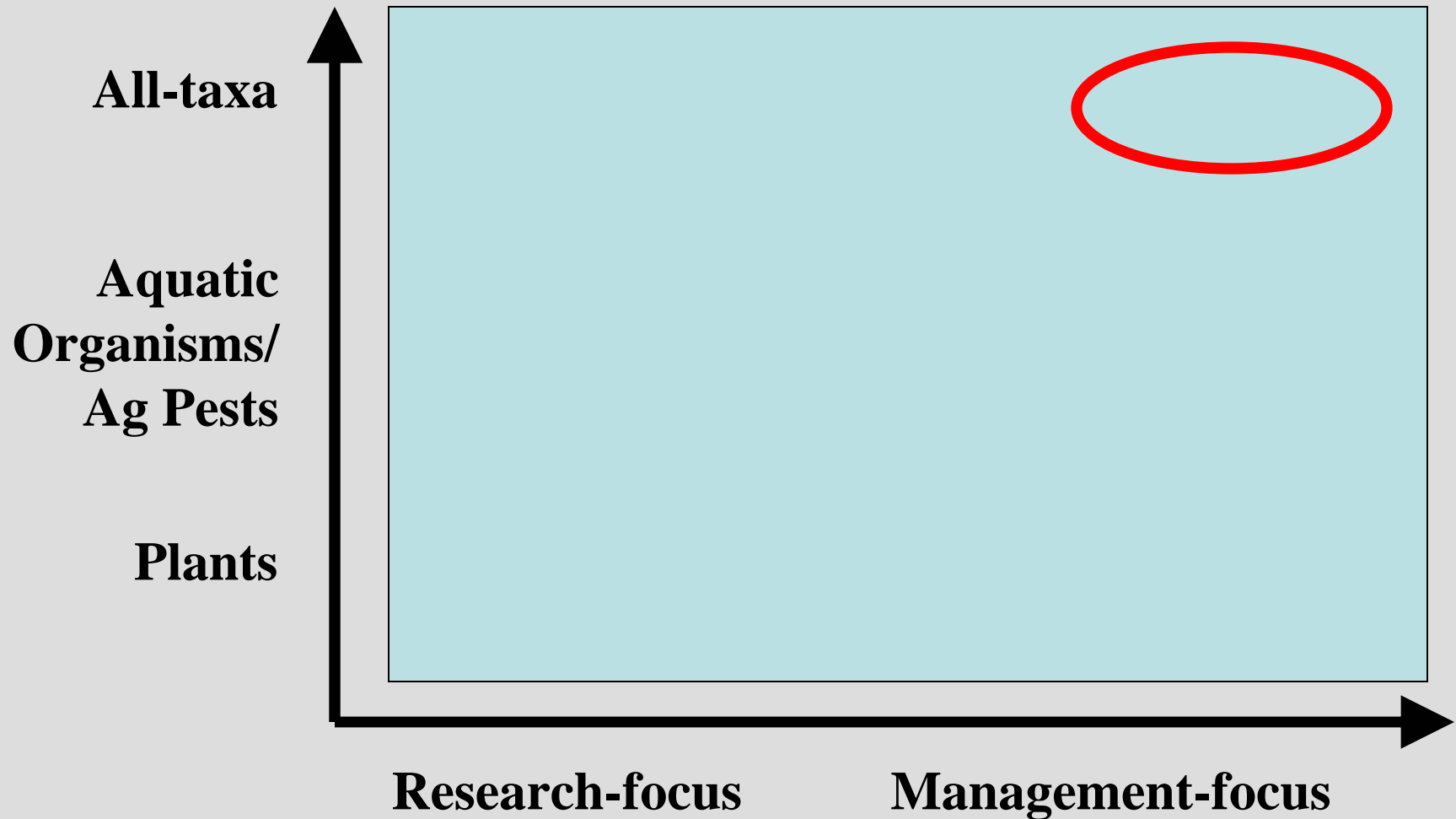


# Partnerships for Regional Invasive Species Management 2008



The eight PRISMs in New York are composed of a diverse base of state agencies, resource managers, industry, non-governmental organizations, resource users and many others. The PRISMs work to plan regional invasive species management, develop early detection and rapid response capabilities and implement eradication projects. They are also a great way for citizens to get involved!

***U.S.-Focus***  
*(partial list)*





**iMapInvasives**  
*geotracking invasive exotic species*



## Lead Partner Organization

- Natural Heritage Program OR  
Other State Agency/Organization
  - Responsibilities:
    - Coordinate with other agencies/organizations involved with invasive species management
    - Coordinate Quality Control of data
    - Coordinate *iMapInvasives* Training
    - Organize *iMapInvasives* Users Advisory Committee
    - Pay annual *iMapInvasives* Service Fee



**iMapInvasives**  
*geotracking invasive exotic species*



## Features of *iMapInvasives*

- **Basic Features**
  - All-taxa, GIS, Occurrence, Treatment, etc.
- **Service Features**
  - For Natural Resource Managers...
  - For Local, Regional, State, Inter-state planners...
- **Beyond the Database**
  - *Intra-state*
  - *Inter-state*
  - Long-term viability

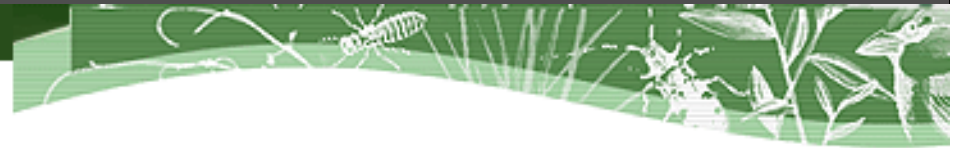




## Basic Features

- 1. Core Fields for data exchange
- 2. Partnership
- 3. All-taxa
- 4. Geographic Information System (GIS)
- 5. Online
- 6. Occurrence, Assessment & Treatment
- 7. Aggregate Data





# 1. Core Data Fields

- Core data-fields; compatible; facilitate data exchange...

## 2: Partnership

A Collaborative Partnership Working to  
Develop a Web-Based Solution for Invasive  
Species Data Aggregation,  
Mapping, Decision-Making & Action!

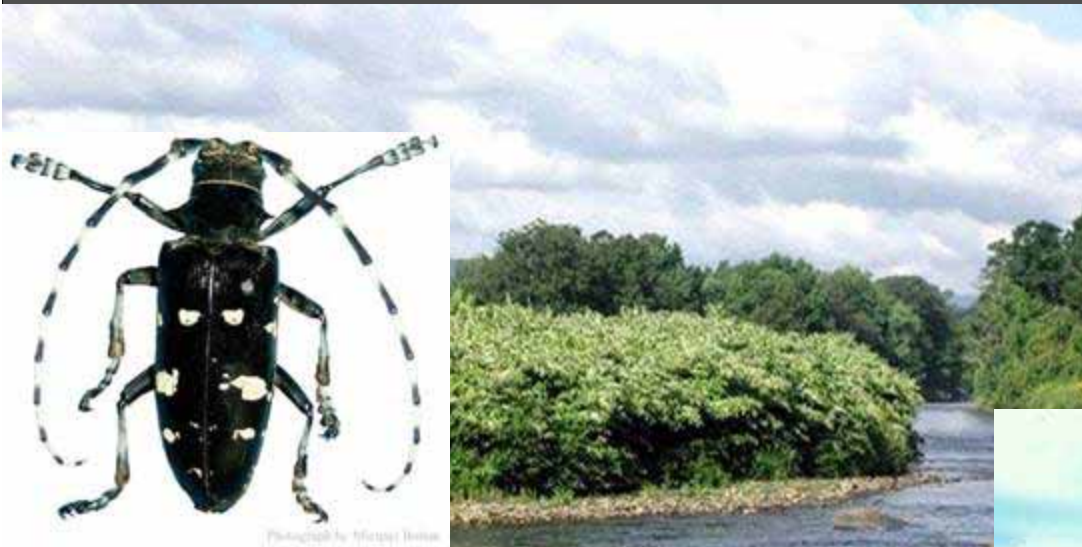




**iMapInvasives**  
*geotracking invasive exotic species*



## 3: All-taxa



UGA3970056



## 4: On-Line

- Available to the public
  - General information (*“fuzzy”, e.g. county-level*)
  - Submit invasives species observation **reports**  
(*verified by trained individuals*)
- Allows trained users to login with a password:
  - View more detailed information applicable to their User Level
  - **Enter data**



Preview Site

## 5: GIS Capabilities!

- \* Ability to view maps & run data queries
- \* GIS = Map + Data & Spatial Analysis





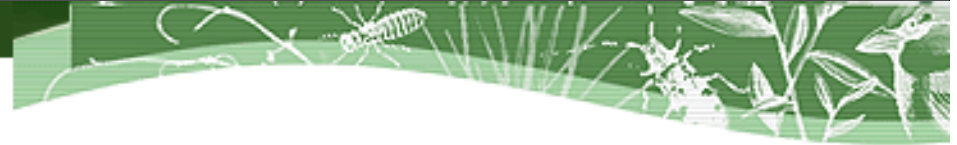


## 6: Occurrence, Assessment *and Treatment Data*

- Occurrence Data (*who, what, when, where*)
- Assessment Data (*more detail*)
  - Repeat visits...
- Treatment Data (*Phase 3*)



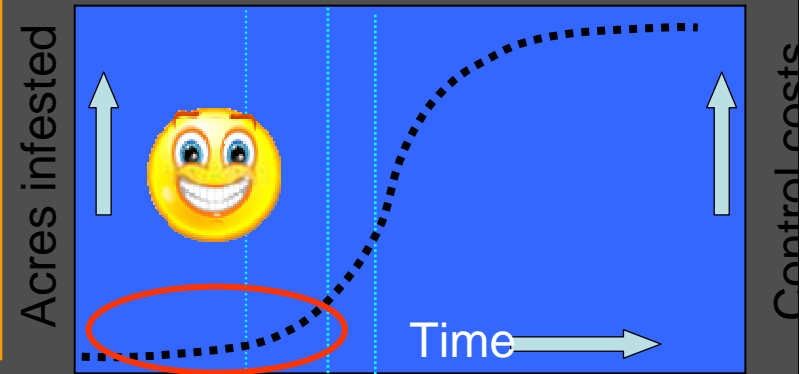
**iMapInvasives**  
*geotracking invasive exotic species*



## 7: Aggregate Data

- WIMS (TNC Access-based application)
- “WIMS-Lite” (ArcPad application)
- CAPS data (Cooperative Agricultural Pest Survey)
- Data from Participating States/Provinces  
Partner Organizations
- Others...

# Service Features *for Natural Resource Managers*



- 1. Tools Provided
- 2. Email Alerts
- 3. Feedback for Future *iMapInvasives* Capabilities

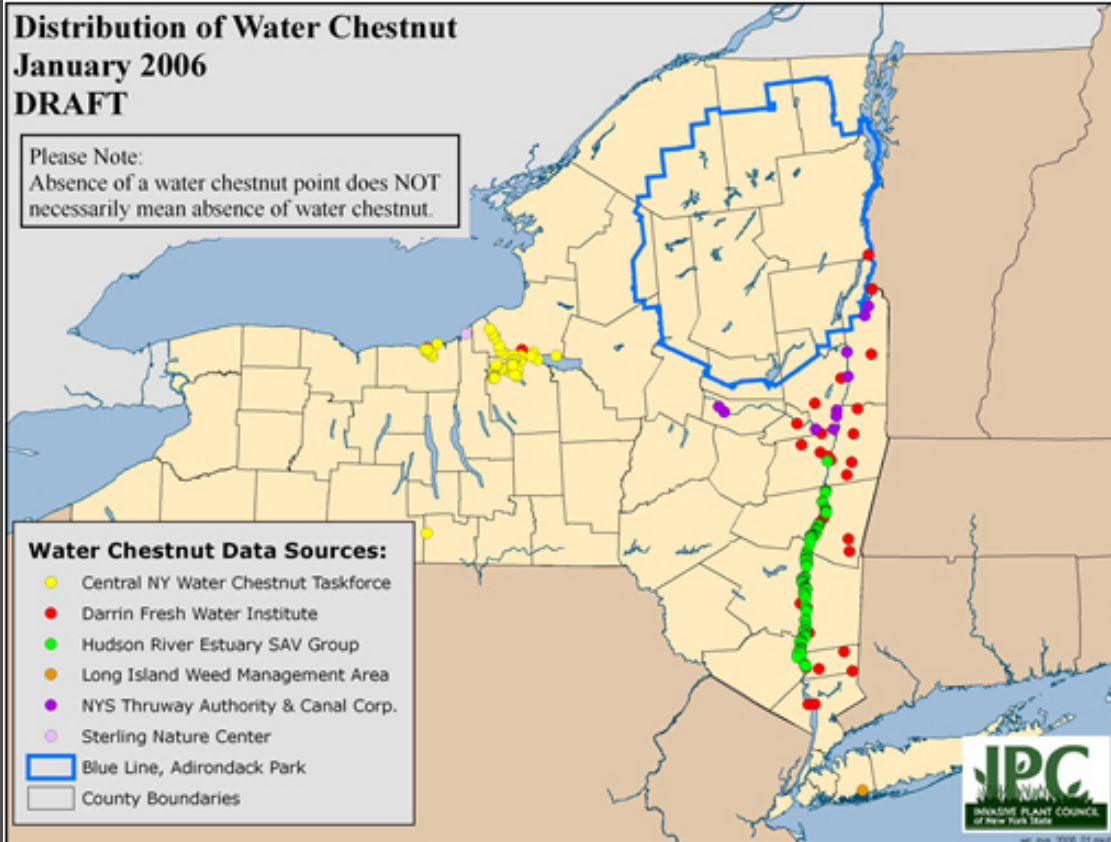
Service Features  
*for Natural Resource  
Managers*

1: Tools Provided

- Site-Level Resolution
- Tracking, monitoring over time
- Quality-Controlled Data (*digital photo or expert-ID*)
- Occurrence, Assessment and Treatment Data

# Early Detection/Rapid Response *by species*

- Facilitate Quick On-the-ground response to *New Invaders*





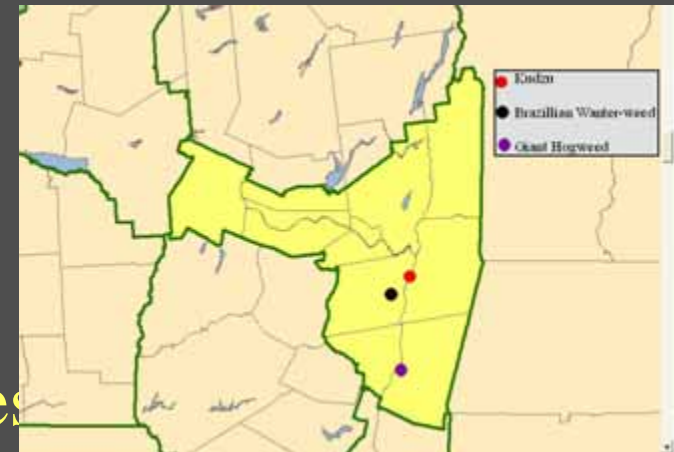
# Early Detection/Rapid Response *by Location/Site*

## Invasive Species Prevention Zones



# Tools Provided (*cont'd*)

- Early Detection (ED) Reports
- Approaching Region (AR) Reports
- Maps for meetings
- Reports By: CWMA, PRISM, County, Watershed, Invasive Species Prevention Zone, *iMapInvasives* User, etc.



May, 2007: NY State Early Detection Invasive Plants by Region.  
REGION: Capital Region

*AR: "Approaching Region". Available data indicate that these plants are not present in this region; however, they are known to occur in adjacent regions or in a state adjacent to this region.*

**Scientific Name**

*Actinidia arguta*  
*Ailanthus altissima*  
*Aralia elata*  
*Buddleia davidii*  
*Bufo umbellatus*  
*Cabomba caroliniana*  
*Caragana arborescens*  
*Cardamine hirsuta*  
*Cardamine impatiens*  
*Carex kobomugi*  
*Centaurea solstitialis*  
*Cirsium palustre*  
*Clematis terniflora*  
*Cnicus vulgaris*  
*Cladonia*

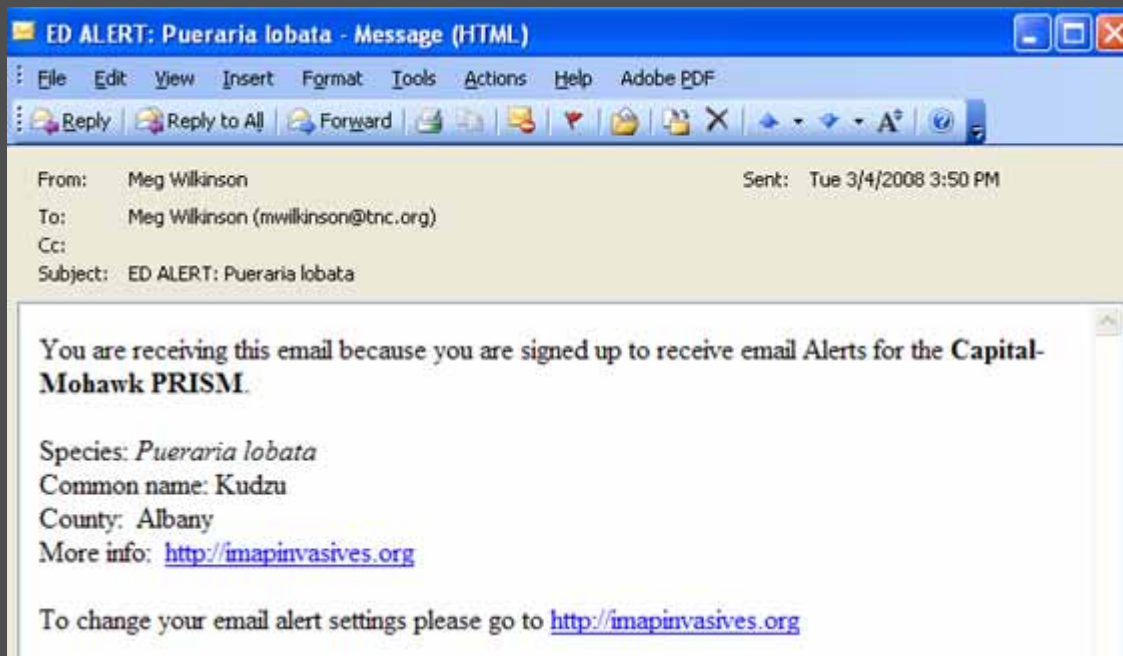
**Preferred Common Name (Other Names)**

Hardy Kiwi (Hardy Kiwifruit)  
Silver Hairgrass  
Japanese Angelica Tree  
Orange-eye Butterfly-bush  
Flowering-rush  
Carolina Fanwort  
Siberian Peashrub  
Hairy Bitter-cress  
Narrowleaf Biscleers (Bushy Rock-cress)  
Japanese Sedge, Asiatic Sand Sedge  
Yellow Star-thistle  
Marsh Thistle (European Marsh Thistle)  
Japanese Virgin's-bower (Sweet Autumn Clematis, Yam-leaf dematis)  
Common Crupina  
Scotch Broom

# Service Features for Natural Resource Managers

## 2. Email Alerts

- By Taxonomic Group
- By Geographic Region
- Frequency: Immediate or Monthly Summary Email



Service Features  
*for Natural Resource  
Managers*

### 3. Contribute Feedback for Future *iMI Capabilities*

- GOAL: Serve the End-user
  - *iMapInvasives* Users Advisory Committee
  - Enhancements/New Features/Capabilities

## Service Features *for Local, Regional (intra-state), State and Inter-state Planners*

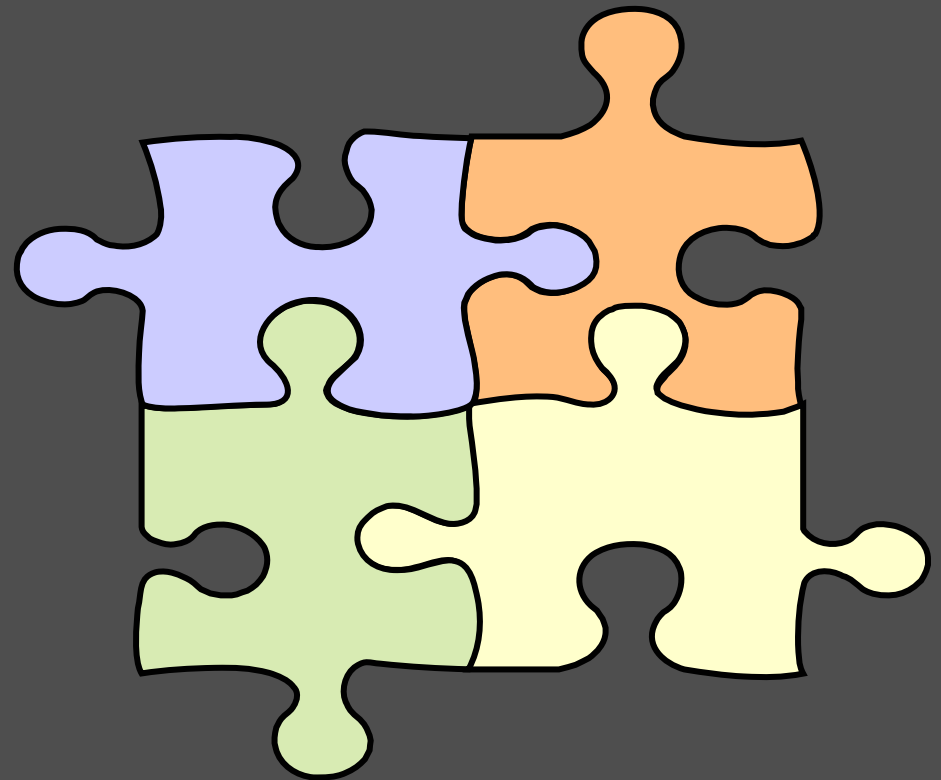
- 1. Networking: *Intra-State AND Inter-State*
- 2. Different User Levels (public, trained user, staff)
- 3. Reports by County, Region, State, Species, Taxonomic Group, etc.
- 4. Reasonable Cost for Participating States



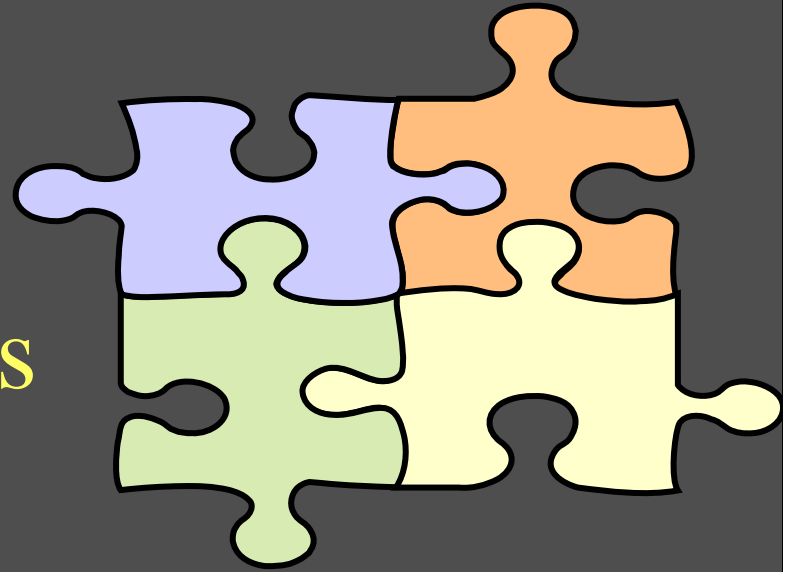
# Beyond the Database

## - Strength of *iMapInvasives*

- ***Intra-state***: Lead Partner Organization
- ***Inter-state***: *iMapInvasives* Network
- **Long-term Viability**

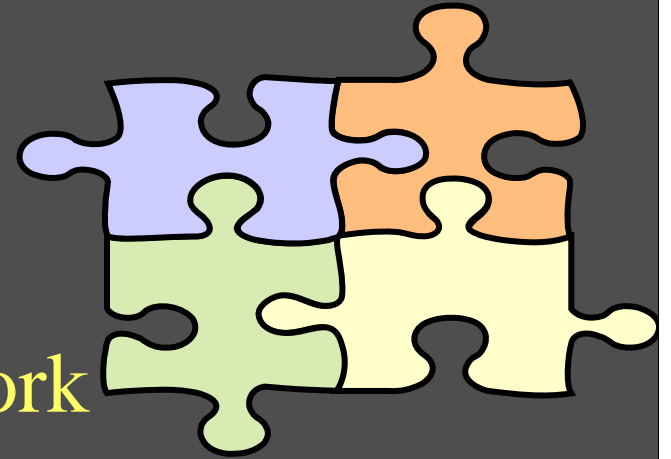


## Beyond the Database – Strength of *iMapInvasives*



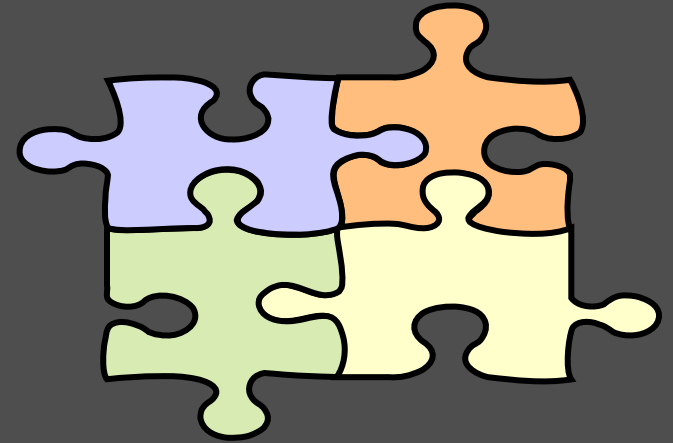
- ***Intra-state***: Lead Partner Organization
  - Engaging partners within their state
  - Coordinating Training
  - Coordinating Quality-Control (species ID and data entry and import)
  - Organizing *iMapInvasives* Users Advisory Committee & Providing feedback to *iMapInvasives*

# Beyond the Database – Strength of *iMapInvasives*



- ***Inter-state: iMapInvasives Network***
  - *iMapInvasives People*
    - Lead Partner Organizations with capability and commitment to the project
    - Network of volunteers and professionals, a resource...
  - *iMapInvasives Project*
    - Benefit of collaboration; efficiency of scale
  - *Invasive Species know no boundaries...*
    - Better use of regional resources
      - Invasive Species Information from other participating states
      - Better prevention/ ED/RR
      - Regional prioritization

# Beyond the Database – Strength of *iMapInvasives*



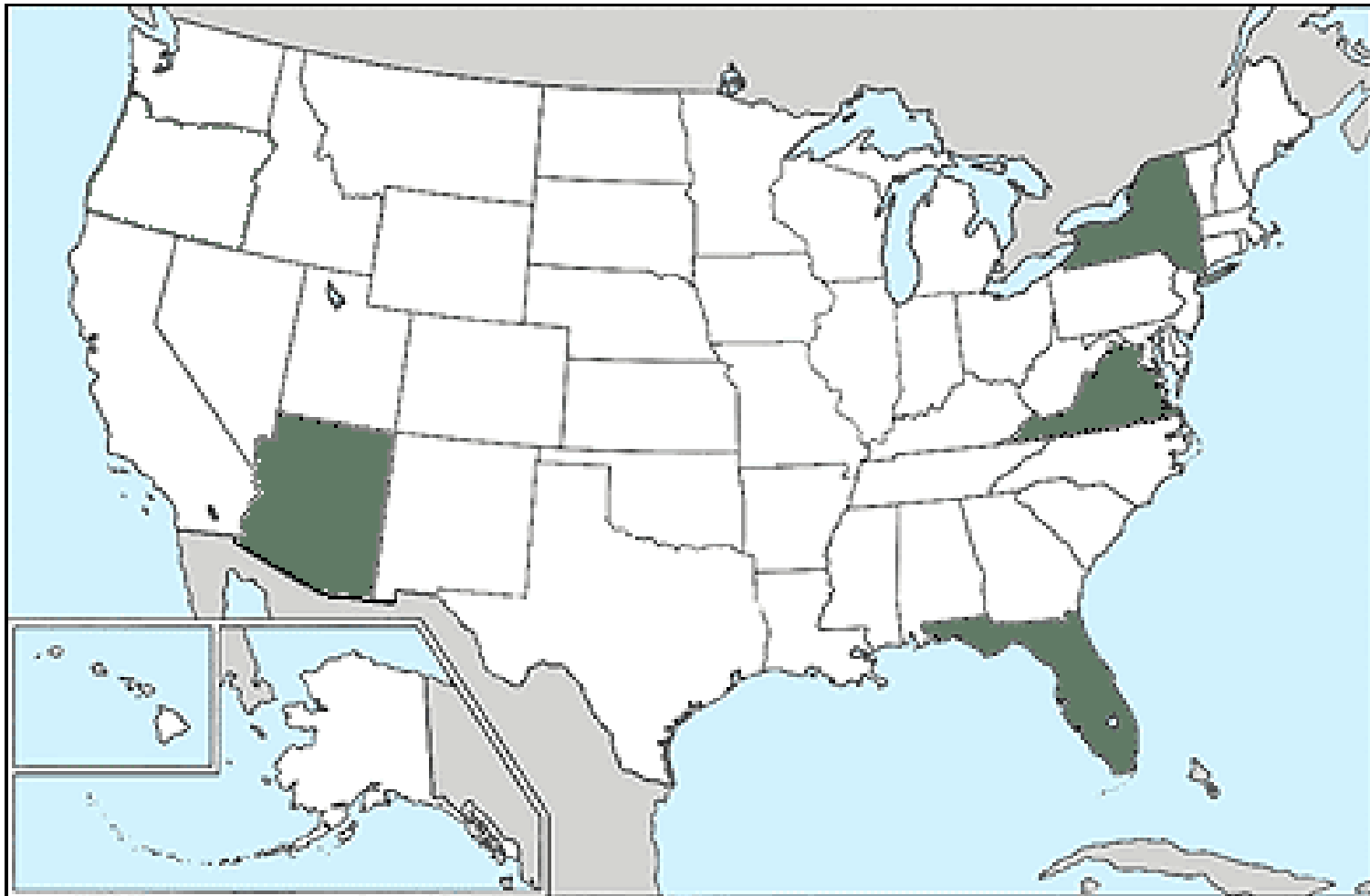
- **Long-term Viability**

- Development funds: TNC & NY & FL & others
- Sustainability funds: *iMapInvasives* Service Fees
- Support of the Lead Partner Organizations
- Support of The Nature Conservancy & NatureServe



**iMapInvasives**  
*geotracking invasive exotic species*

[imapinvasives.org](http://imapinvasives.org)





# Preview Site: iMapInvasives.org

The screenshot displays the iMapInvasives.org website interface. At the top left is the logo for iMapInvasives, featuring a green leaf and a black insect, with the text "iMapInvasives" and the tagline "geomapping invasive exotic species". To the right of the logo is the title "New York Invasive Species Map". Below the title is a navigation bar with icons for home, search, and other functions, and a button labeled "Sample Plant Data".

The main content area shows a map of New York State with a yellow outline. The map is populated with numerous green dots representing invasive species locations. Surrounding states are labeled: Vermont, New Hampshire, Massachusetts, Connecticut, Rhode Island, New Jersey, and Pennsylvania. A scale bar in kilometers (0, 50, 100) is located in the bottom left corner of the map area.

On the left side, there is a sidebar with several sections:

- Map Zoom**: A dropdown menu for zooming in and out.
- Query**: A section with two radio buttons: "Show All Points" (selected) and "Unselect Points". Below are two dropdown menus for "Common Name" (set to "Purple Loosestrife") and "Scientific Name" (set to "Lythrum salicaria"). A button "View Atlas for Selected Species" is below these.
- By Contributing Organization**: A dropdown menu set to "by Contributing Organization".
- Reports**: A section for generating reports.
- Layers**: A section with a "See Instructions" link and a list of map layers: "New York Invasives" (checked), "State Boundary" (checked), "County Boundaries" (unchecked), "PRISMs" (checked), "HUC" (unchecked), "Towns" (unchecked), and "Roads" (unchecked).

In the top right corner of the map area, there is a small button labeled "inst".

# Contributing Organization: APIPP

**iMapInvasives**  
geotracking invasive exotic species

## New York Invasive Species Map

Sample Plant Data

**Query Window**

**Identify Information**

County  
St. Lawrence  
Prism  
APIPP

Species Name	Scientific Name	County	Agency
Japanese Knotweed (Japanese Bamboo, Japanese Arrowroot)	Fallopia japonica	St. Lawrence	APIPP
Japanese Knotweed (Japanese Bamboo, Japanese Arrowroot)	Fallopia japonica	St. Lawrence	APIPP

Western NY      Finger Lakes      Capital Region

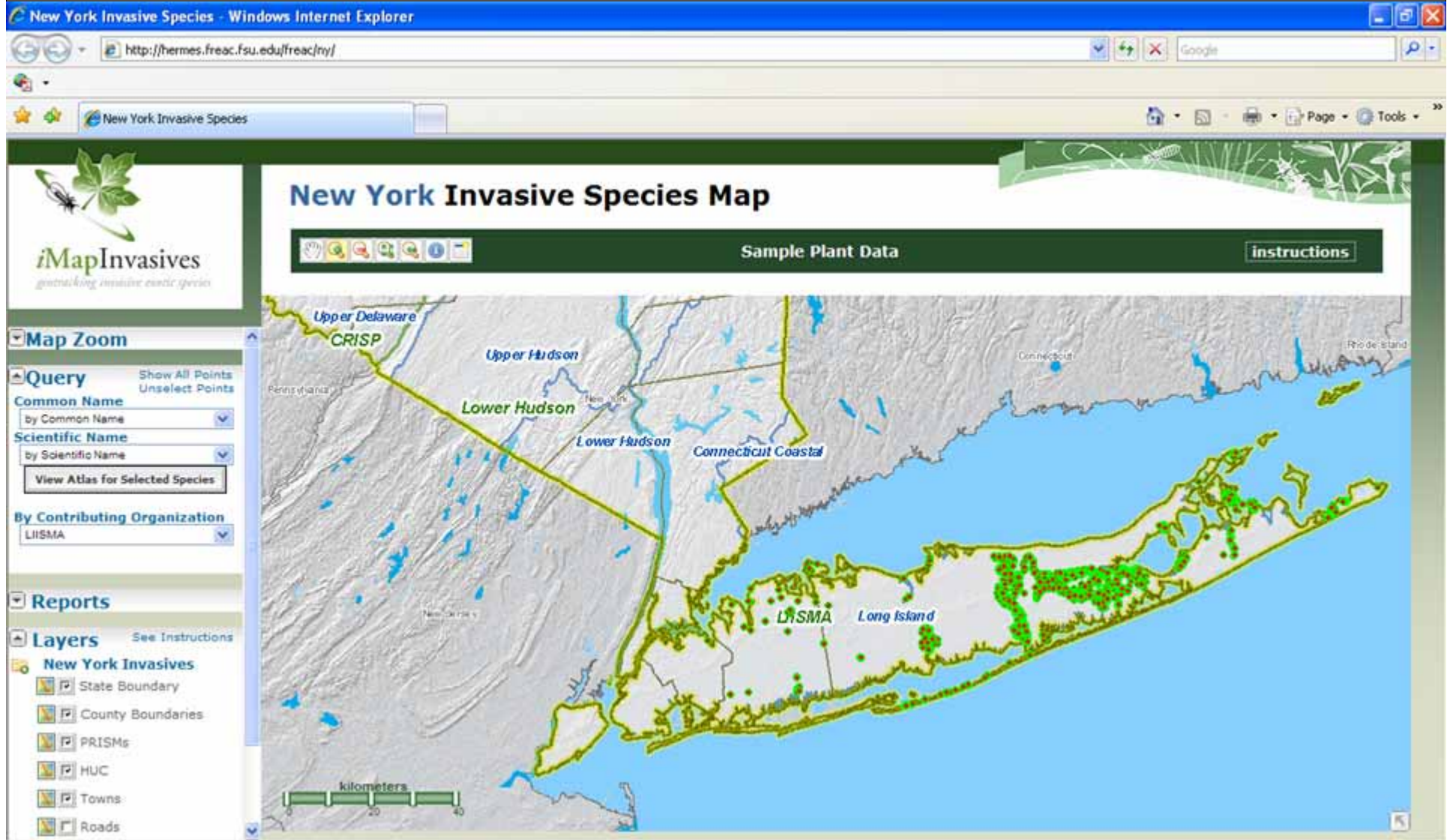
CRISP

kilometers

0 40 80



# Contributing Organization: LIISMA



# New York Invasive Species Map



Sample Plant Data [instructions](#)

**Map Zoom**

**Query** Show All Points  
Unselect Points

**Common Name**  
by Common Name

**Scientific Name**  
by Scientific Name

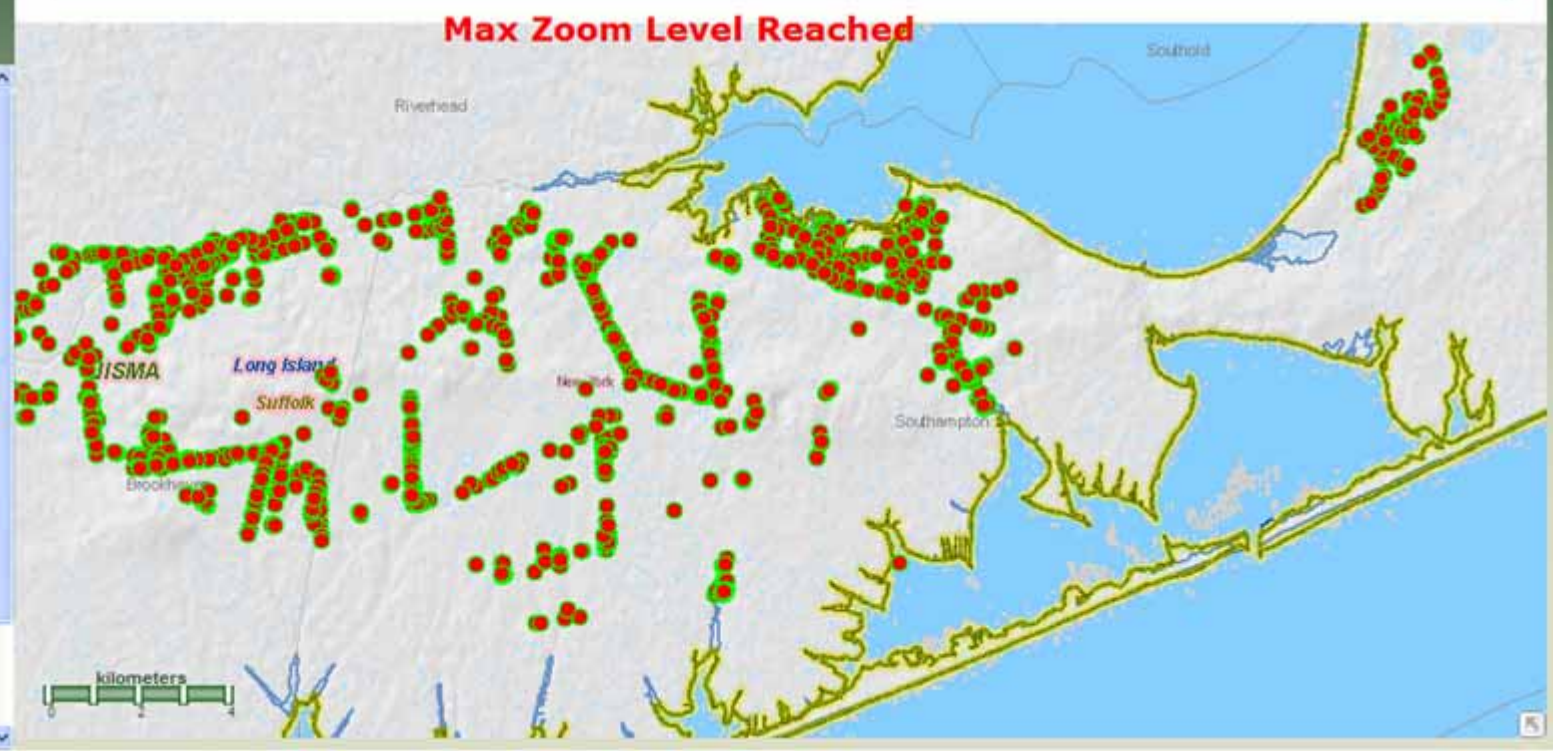
[View Atlas for Selected Species](#)

**By Contributing Organization**  
LIISMA

**Reports**

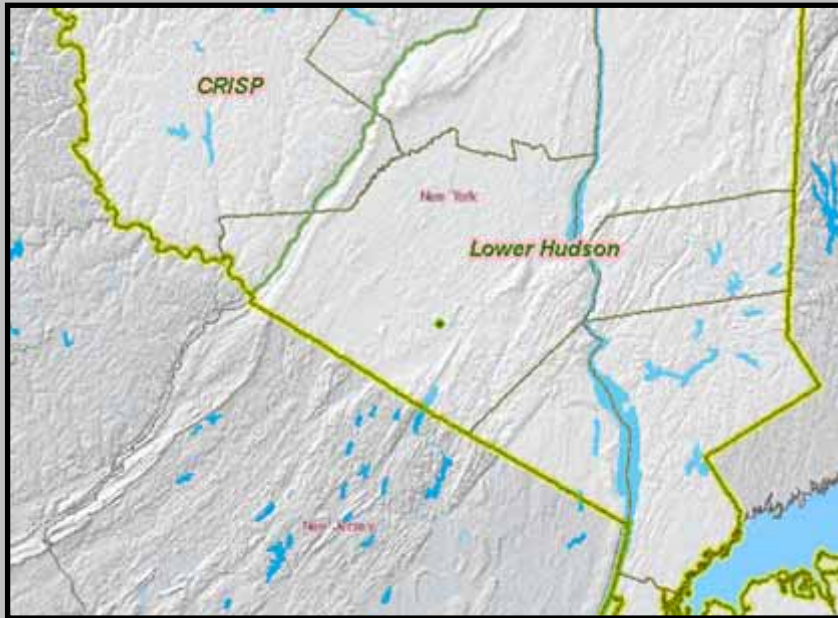
**Layers** See Instructions

- New York Invasives
- State Boundary
- County Boundaries
- PRISMs
- HUC
- Towns
- Roads





# Hydrilla



## Orange County:

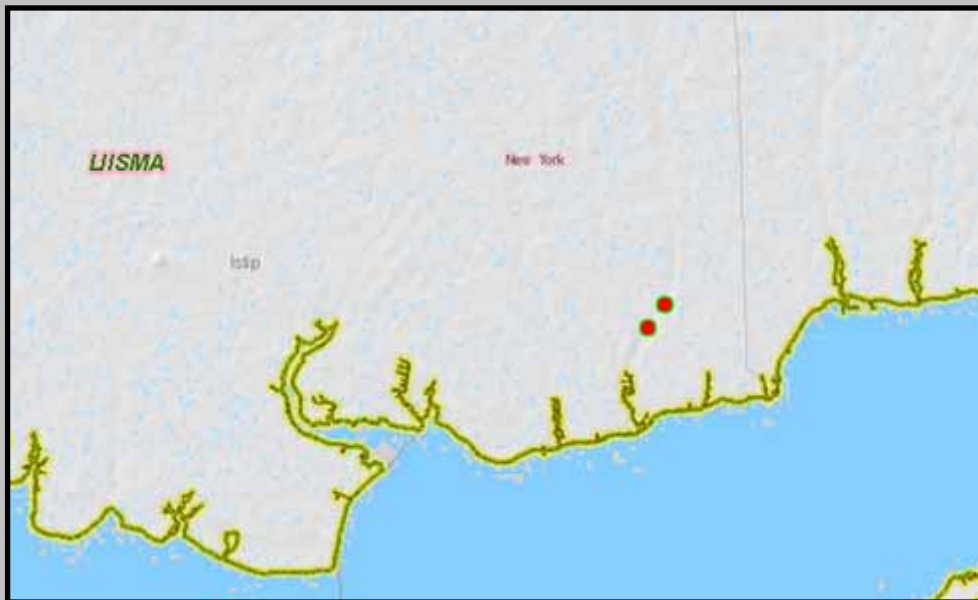
Creamery Pond (aka Swetlows Pond)

Town of Sugar Loaf (Chester)

9 acre pond.

August, 2008

Scott Kishbaugh, NYSDEC, Division of Water



## Long Island:

Blydenburgh Pond (2008) Town of Smithtown  
*(not in Preview Site, yet)*

Sans Souci Pond (2008) Town of Islip  
*(a chain of 11 lakes – two infested)*

Lotus Lake (2008) Town of Islip

Dan Lewis & Kathy Schwager  
& Scott Kishbaugh





**iMapInvasives**  
*geotracking invasive exotic species*



***iMapInvasives:***  
***More than an Online, GIS-based,***  
***All-taxa Database***

# Contact Information

**Meg Wilkinson**


Invasive Species Database Program Coordinator  
New York Natural Heritage Program  
Albany, NY

**E-mail:** [mwilkinson@tnc.org](mailto:mwilkinson@tnc.org)

**Phone:** *Call Shereen @ 518-402-8949*



# Thank You & Questions?



Yeah, where'd my car go?